



**New Construction,  
Boutique Office Suite Available  
in the Heart of Harvard Square**



ASANA PARTNERS



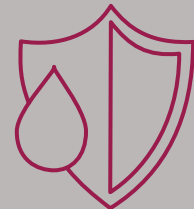


## One Brattle Street

One Brattle Street is offering 6,313 square feet of newly renovated office suites in the heart of Harvard Square, one of Boston's most iconic and historic areas. The property offers ample convenience to the MBTA station and Harvard Yard, as well as numerous world class retail, restaurant, fitness, and hotel options for tenants to enjoy.



Newly renovated elevators, HVAC, windows & roof



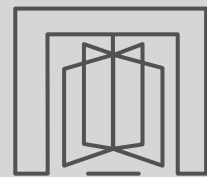
Boutique, modern suite space environment



An abundance of natural light



Directly adjacent to the MBTA Harvard Square Red Line

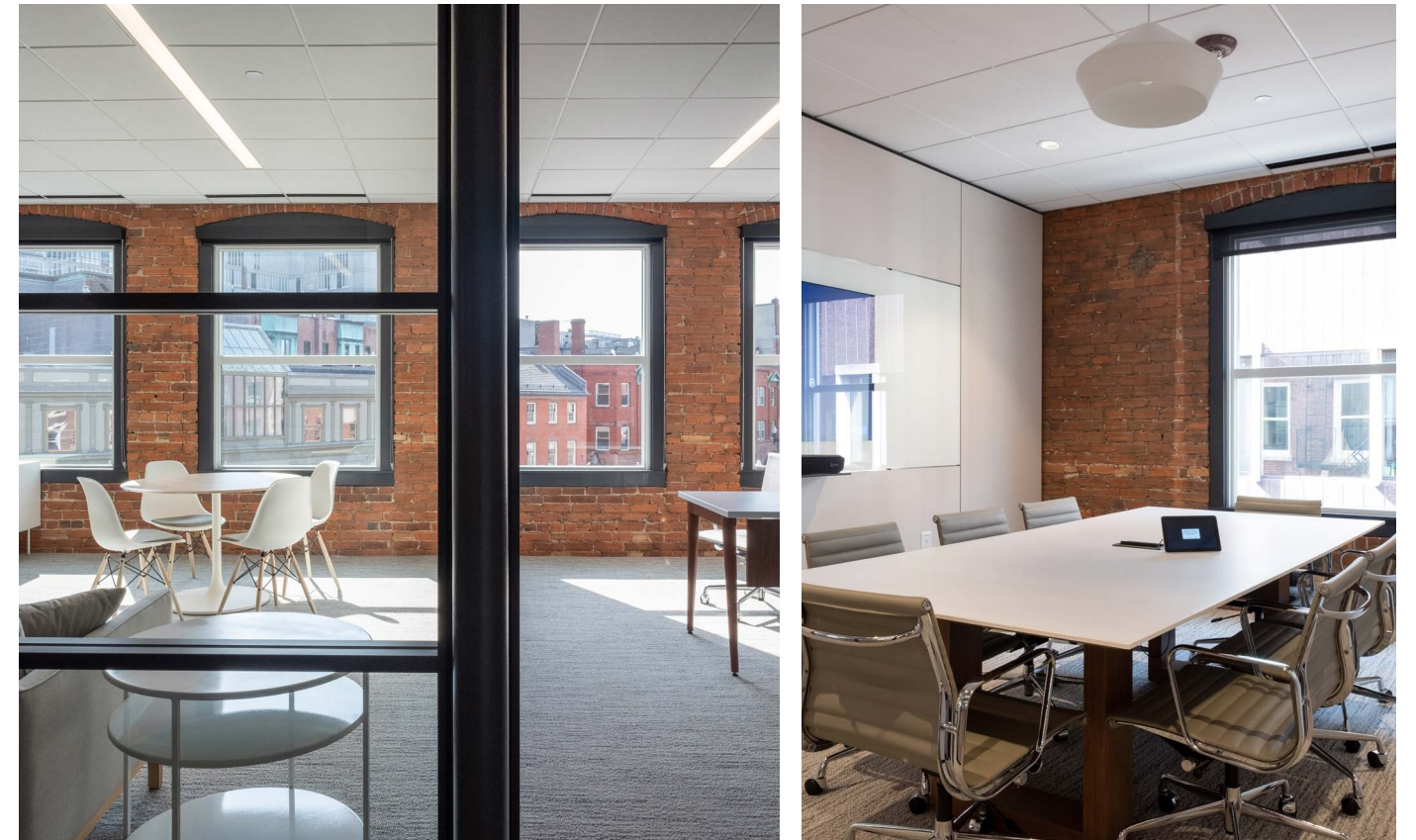


New, class A main entry lobby



Highly walkable corridor with close proximity to retail, amenities, and dining locations

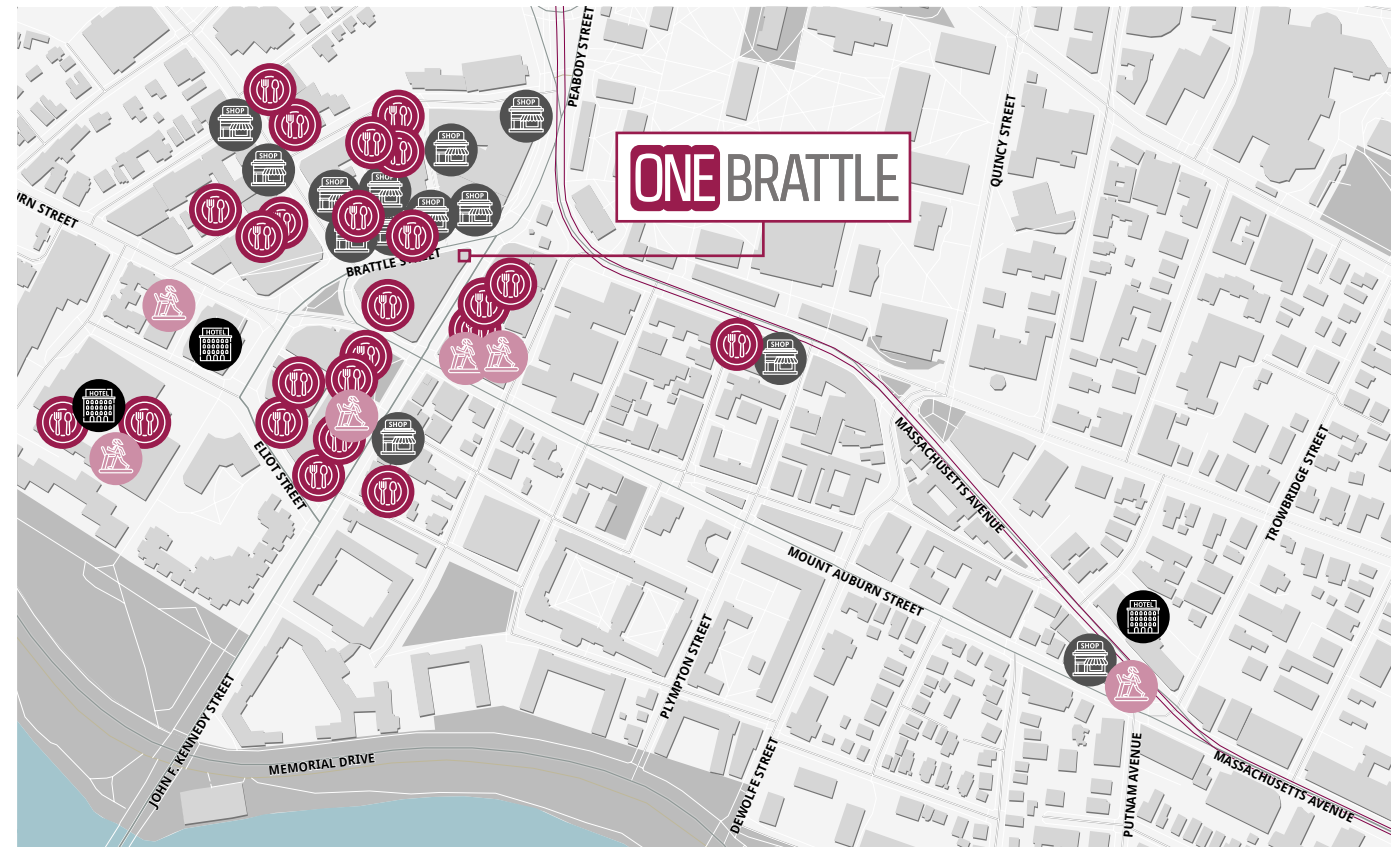
## Renovated Third Floor Suite



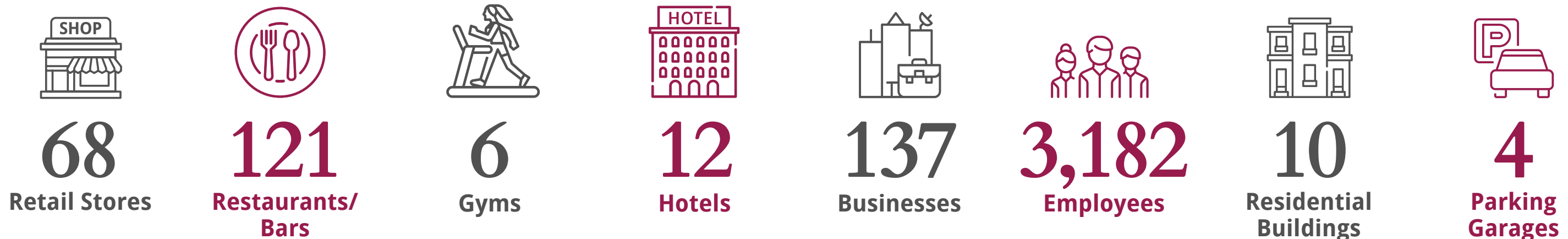


# ONE BRATTLE

## Positioned in the Heart of Harvard Square



## Within .5 miles of One Brattle...



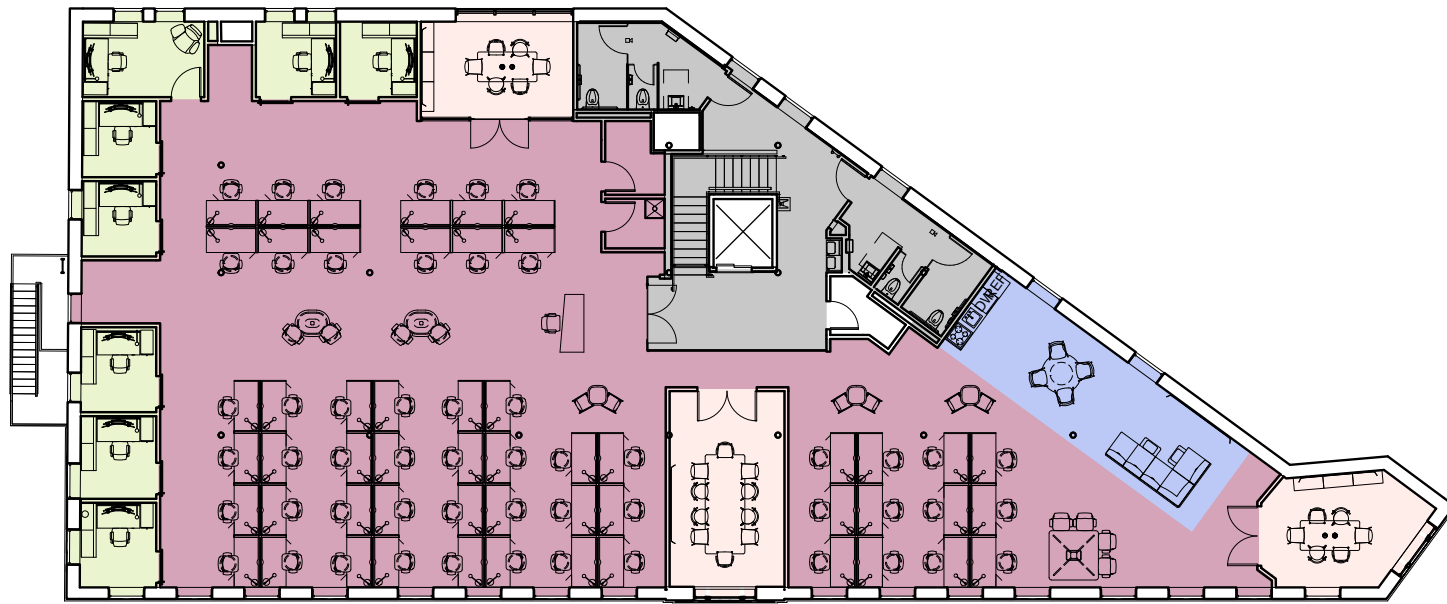


# Availability

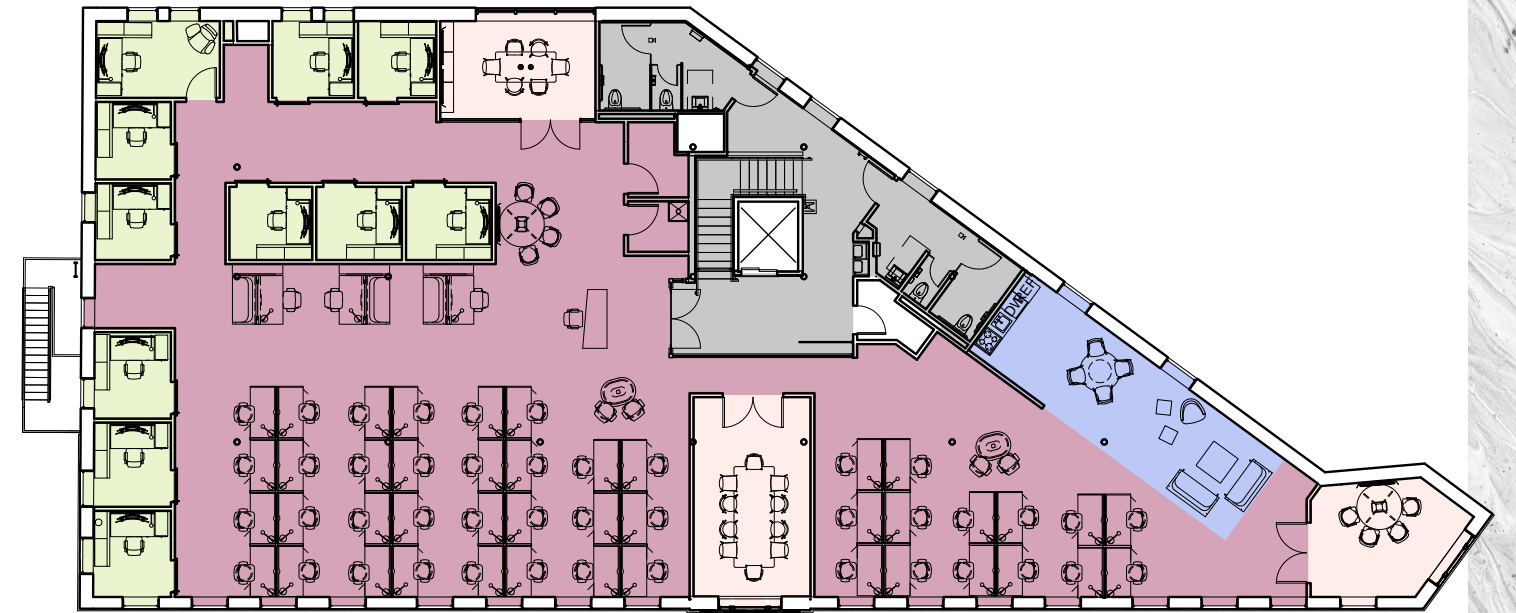
## Floor 2 – 6,313 SF

AREA TYPES

- Conference Room
- Kitchenette/Lounge
- Open Office
- Private Offices
- Tenant Common Area



Area Scheme | Option 1 | 6,313 SF



Area Scheme | Option 2 | 6,313 SF





ONE BRATTLE

onebrattlestreet.com

For more information, please contact:

**John Osten**

+1 617 531 4107

john.osten@am.jll.com

**Molly Heath**

+1 617 316 6489

molly.heath@am.jll.com

**Maggie Dore**

+1 617 531 4196

maggie.dore@am.jll.com



ASANA PARTNERS

